



Gladwin Way, CM20 1AS
Essex





Gladwin Way, CM20 1AS

Discover your ideal property just moments from Harlow Town Railway station! A charming one bedroom apartment overlook the stunning grounds of the Fifth Avenue development.

The property boasts a spacious open-plan living area with contemporary style kitchen filled with natural light. The modern fitted kitchen comes complete with integrated appliances and plentiful storage. Plus a spacious double bedroom and bathroom suite.

With allocated off-street parking plus visitor spaces, and being just a short stroll from local shops, schools, and transport links—including Harlow Town train station—this is an exceptional place to call home. Ideal for professionals commuting into the city as well as Princess Alexandra Hospital staff!

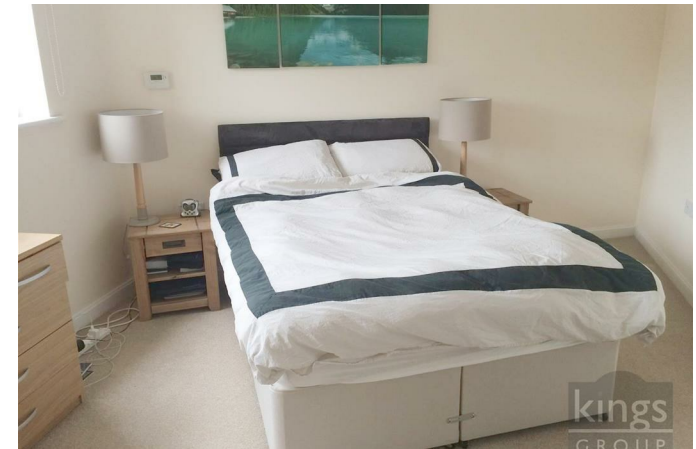
Enquire today to book into our open day!

£1,295 PCM



- Available 20th March
- Desired development
- EPC Rating B

- Moments from Princess Alexandra Hospital & Harlow Town railway station
- Enquire to view on our open day
- Council tax band B





kings
GROUP

